

Calderdale and
Huddersfield
NHS Charity



TOGETHER WE MAKE A DIFFERENCE

Calderdale and Huddersfield NHS Charity
Annual Report and Accounts 2023-24

CONTENTS

Pages	Contents
03	A message from our Chair
04-08	Highlights and achievements from the year
09	Our year in numbers
10	2023 – 24 objectives
11-12	Looking ahead
13	Key actions 2024 - 25
14-42	Financial statements



A message from our Chair



This has been a year of amazing achievements for our Charity, due to our dedicated supporters and donors. Their kindness and generosity enables the Charity to make an amazing difference, for our patients, their families and communities.

The last year has seen us rebrand and relaunch the Charity, with a new Strategy setting out our ambition to be a true partner to Calderdale and Huddersfield NHS Foundation Trust. We were also incredibly honoured to be named as one of two nominated charities by the Mayor of Kirklees.

You will see in the Report that our team and our fundraisers have been extremely active. From cricket tournaments, long distance walks and runs, to concerts, bake sales and cabaret nights there have been a range of events and activities for the Charity. These have raised money to fund those things that make a difference to the experience of our patients and their families such as environmental improvements at the Rainbow Community Hub in Elland, to the start of the Wellbeing Garden at Huddersfield Royal Infirmary, and Hope Bags for young people with a mental health condition. There have been so many special moments across the year.

I hope you enjoy reading this report and however you have played a part during the year, thank you for your continued support.

Helen Hirst, Chair

Highlights and achievements



April 2023

Rainbow Community Hub:

Kind supporters helped to fund £83K for the Rainbow Community Hub, supporting the garden space, sensory room and play and distraction toys. We attended the grand opening in April, celebrating the new hub as well as our long-lasting relationship with the team.

“What CHFT Charity managed to do, thanks to wonderful supporters, to help us to enhance our facility is immeasurable!”

Katie Booth, Clinical Nurse Manager

Karate Fundraiser:

Colin and Fay Hanson held a second fundraiser in aid of our Stroke Unit as a thanks to all the staff who cared for Colin back in 2019. Colin is a Chief Karate Instructor and decided to host a Karate Fitness event. Their fundraiser raised an amazing amount of £6,759!

Marigold Magnets:

Thanks to kind donations, Marigold Magnets were funded to improve end-of-life patient care by making each room identifiable to staff, preventing unnecessary interruptions and enabling privacy and dignity for patients and their families.

May 2023

Offa’s Dyke Challenge:

Robert Freeman set off on his second fundraiser to complete Offa’s Dyke, which is a 177-mile route up the English/Welsh border. Rob completed the tough challenge in six days to say thank you to our colleagues for saving his life.

Staff training:

Thanks to kind donations, four Lung Cancer colleagues attended a conference to enhance patient care. Specialist Nurse Wendy Teague highlighted the value of networking and learning from other professionals.

Exciting announcement...

We were delighted when Councillor Cahal Burke chose our Charity and RAFA Huddersfield as his chosen charities during his year as Mayor of Kirklees in 2023/24.



June 2023

Charity Cricket Tournament:

Cricket, curry and charity fundraising was the vibe of June. We held a cricket tournament between Calderdale and Huddersfield NHS FT and Mid Yorkshire Teaching NHS Trust to promote teamwork amongst different areas within both trusts.

Dementia support:

Thanks to generous donations, two performances of the play 'When or Where' were funded. The play raises awareness about older people living with dementia, advocating for a respectful approach to their care.

Night at the Cabaret:

Laraine Cowgill hosted an Evening of Cabaret at the Wellington Rooms. This was Laraine's second amazing fundraising event in aid of the Urology Diagnostic Unit. This event raised £920.50 towards enhancing the experience of patients.

July 2023

NHS 75:

In July, our Trust and community sites were lively with Big Tea Parties, fundraising, and cake to mark the NHS's 75th anniversary. The second Big Hospital Walk gathered 55 walkers and dogs to raise funds and show appreciation for our local NHS services.



"The day was filled with fun, laughter, and of course, competitiveness! We are already looking forward to next year's event."

Emma Kovaleski, Charity Manager



Visual affect:

Thanks to generous donations, our Orthopaedic Outpatients Department at HRI were enhanced with two wall murals: a beach view and a poem by the OP Manager, Wendy Hewitt-Huge adding brightness and charm to the space.

August 2023

Hope Bags:

Thanks to kind donations to our Children's Ward, 'Hope Bags' were funded for younger patients suffering from mental health. These bags include items to help reduce stress, anxiety, and negative thoughts.

Gratitude:

This month, we shone a spotlight on one of our amazing fundraisers, Gerry Robertson, whose son, Thomas, passed away from Diabetes. Gerry continues fundraising to honour Thomas's wish of making a difference and has raised £5,500 to date.



September 2023



Amazing Fundraisers:

We had some amazing fundraisers throughout September, who either took on the Yorkshire 3 Peaks or the Great North Run. Madeline Hanna, Library Assistant at CHFT, said: "I had such a great day completing the Yorkshire 3 Peaks, it was definitely the most challenging thing I've ever done, but so worth it."

Stoma Day Support:

We were delighted to support the Colorectal Nurses to hold an open day for Stoma Patients at Brier Court. Over 200 patients attended to view stoma care products as well as meet nurses, Macmillan advisors, support groups and to chat over a cuppa.

Supporting Cancer Patients:

We were delighted to partner up with our Prehabilitation Cancer Team at CHFT, Ella Dawson Foundation, MOVE Charity and Active Calderdale to establish the first 5K Your Way in Huddersfield and Halifax. This is an initiative for those living with and beyond cancer, families, friends, and those working in cancer services to walk, jog, run, or cheer at a Park Run.



October 2023

Music Therapy:

Thanks to kind donations, we provided DAB radios for our Radiology Department to enhance patient experience. Amreet Uppal, Service Lead, said: "Music therapy helps the patient journey from admission to discharge, as it provides a calming atmosphere."

Halloween Event:

CHFT Charity were delighted to partner up with Project SEARCH Calderdale to host our first ever Halloween Virtual Balloon Race throughout October, with the winner receiving a hamper. We received a great response to this event and look forward to working with Project SEARCH Calderdale again in the future.

Colleague Support:

It's important to us to look after our colleagues as well as our patients. On World Menopause Day, thanks to kind donations, handheld fans were funded for colleagues who are facing menopause. The fans have helped to ease symptoms for colleagues, helping them to go about their daily duties.

"These fans, along with additional resources, enhances our ethos of One Culture of Care for our colleagues."

Samantha Lindl, Wellbeing Advisor



November 2023

My Forever Box:

Thanks to generous donations into the Palliative Care Fund, you helped to fund My Forever boxes. These boxes are a personal memory making box to enable a child to process the death of a significant adult or sibling.

Colleague Wellbeing on Ward 19:

Following staff survey results, Ward 19 noted that there was no space to take time out and reflect. The Charity funded enhancements to turn a basic staff area into a wellbeing room.

“We have been given a safe space to allow us to treasure memories on special occasions”

Family member of a patient

Amazing Fundraisers:

On World Prematurity Day, we shone a light on Michelle and Dan who raised £420 for our Neonatal Intensive Care Unit. The family wanted to raised funds to say a huge thanks to the amazing care they received whilst their daughter was poorly.

December 2023

Charity Christmas Concert:

We were delighted to host a Charity Concert at Huddersfield Town Hall in aid of the Mayor’s chosen Charities, CHFT Charity and RAFA Huddersfield. It was a fantastic evening, especially as Ian Noonan, Consultant Nurse for Mental Health, played alongside the Band of the Royal Air Force College.

Patient and Colleague Experience:

Thanks to kind donations into our CHFT Eye Fund, we were able to fund 2 eyeball models. Both models can come apart so patients can understand where their eye problems are. These models have made a positive impact on both patients and staff, enabling education and understanding.

Christmas Cheer:

The CHFT Charity Team organised for many schools and community choirs to visit HRI and CRH throughout December to bring some festive joy and cheer to patients and visitors.



January 2024

Wellbeing Garden:

Thanks to kind donations and support from NHS Charities Together, work started on our Wellbeing Garden at Huddersfield Royal Infirmary. This garden is for patients, colleagues and visitors and includes with seven different zones, providing space for socialising, gentle exercise, seclusion and reflection.



February 2024

Shh Campaign:

We spent lots of time working collaboratively with the Trust to implement a *Shh Campaign*; Sleep Helps Healing which is essential for patients. Feedback from patients had highlighted noise on the wards and particularly from noisy bins. Thanks to kind donations, we were able to fund soft close bins for all areas.

Bereavement Support:

Kind donations were able to support and comfort bereaved families on the Labour Ward at Calderdale Royal Hospital. We funded babygrows for the smallest babies that are sadly stillborn or miscarried between 20-26 weeks.



Boxing Event:

CHFT Charity, alongside our friends at RAFA Huddersfield Branch, hosted an evening of Olympic Style amateur Boxing at the John Smith's Stadium in aid of the Mayor's chosen Charities of the Year 2023/24.

March 2024

Colleague training:

During Neurodiversity Week, we were proud to fund the Autism Bus to attend Huddersfield Royal Infirmary. The Autism Bus allows colleagues to experience the sensory processing difficulties faced by people on the autism spectrum. The Neurodiversity Week raised an amazing amount of £700.



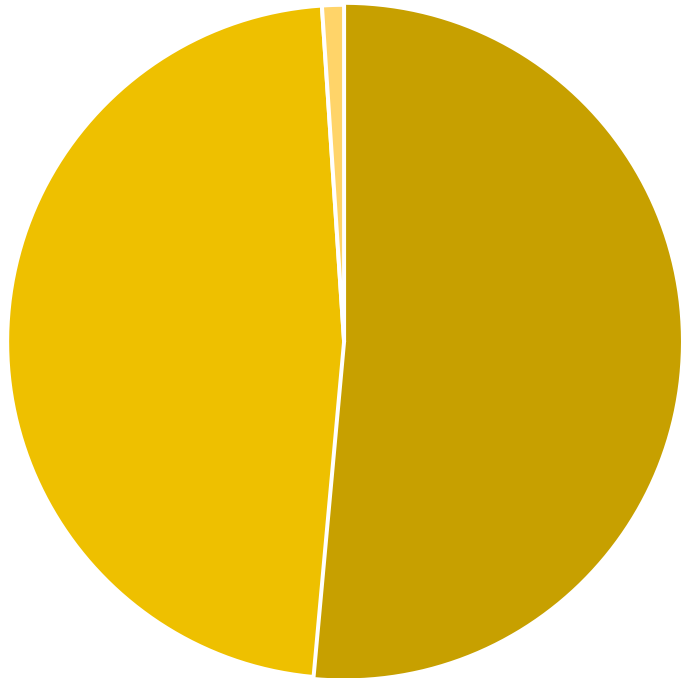
Lifesaving equipment:

In partnership with Todmorden Town Council, we proudly funded 7 new publicly accessible defibrillators across Todmorden. Within 2 weeks of installation, two were successfully deployed. This shows the importance of these defibrillators, and how their presence can make a difference between life and death.

Our year in numbers

INCOME

Donations	£196K
Legacies	£181K
Investments	£4K

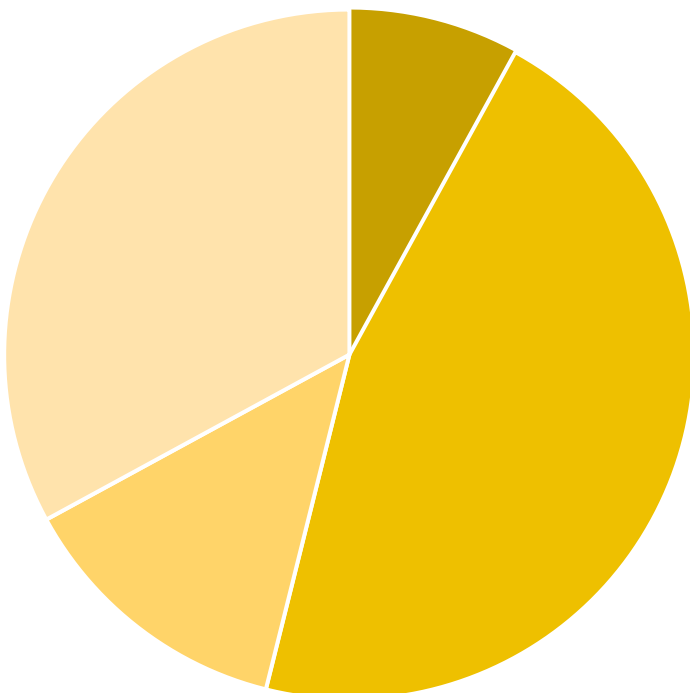


■ Donations ■ Legacies ■ Investments

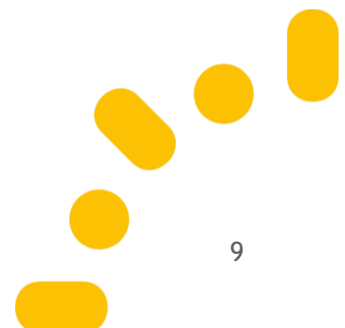


EXPENDITURE

New buildings and refurbishments	£40K
New equipment	£232k
Staff education and welfare	£66K
Patient education and welfare	£167K



■ New buildings and refurbishment ■ New equipment
■ Staff education and welfare ■ Patient education and welfare





2023 - 24 objectives

During the year, we have continued to develop and grow as a charitable organisation operating within the Calderdale and Huddersfield communities. The team have focused on delivering the objectives laid out in the 22 23 Impact Report, alongside developing a robust action plan for the future (see page 13).

We will develop mutually beneficial partnerships

We will identify ways in which we can work more closely together with local businesses, community groups, schools and other local charities, developing meaningful and impactful partnerships.

Update: The Charity has continued to strengthen its presence across the communities of Calderdale and Huddersfield, focussing on developing partnerships for the immediate and longer term. In particular, the Charity would like to thank the following organisations:

- Businesses – Vinci, IBI.
- Schools and community groups – Trinity Academy Ackroydon, Kirklees College, Salterlee Primary School, Halifax Catholic Club, Huddersfield University, Lindley Community Group.
- Todmorden Town Council, RAFA, Mayor of Kirklees.

We will work in collaboration

With CHFT colleagues to ensure donations and charitable funds are well spent, meeting the objectives of our charity and making a positive difference to patient experience and colleague wellbeing. We will evaluate impact and outcomes and share learning and insight from the grants we provide.

Update: The Charity has continued to strengthen its position across CHFT, and in October 2024 updated the grant funding process, to ensure a consistent approach evaluating and monitoring the both applications for funding and the impact of these.

We will refresh and renew our brand

We will enlist the support of a brand agency to help take the charity brand to the next level.

Update: The Charity relaunched in June 2024 with an Amazing New Brand identity and supporting strategy. In the upcoming year (2024 - 25), the Charity will take the next step in raising its profile, through the growth of meaningful partnerships, engagement with communities and launching a series of fundraising

campaigns and appeals.

We are sustainable for the future

We will develop a longer-term fundraising plan, to understand the charities potential or growth and future sustainability. Alongside this we will adopt modern database systems to manage all aspects of fundraising and communications.

Update: With thanks to the support from the NHS Charities Together Development Grant, the Charity enlisted the support of Gifted Philanthropy Ltd to conduct a thorough review of the charity and opportunities for growth and sustainability. The output of the study was reviewed by the Charitable Funds Committee and a plan developed.

We maximise opportunities to learn

We will continue to work closely across the NHS Charity sector and play an active part as a member charity of NHS Charities Together.

Update: The Charity is a proud member charity of NHS Charities Together and during the year played an active role in numerous membership led events.

We are efficient and effective

We will review the charity grant funding operations to maximise opportunities to make an amazing difference.

Update: A thorough review and update to the charity grant funding operations was undertaken in late 2023, with a view to realigning the application, monitoring and evaluation processes to the charity strategy.



Looking ahead

Strategy and realignment of goals. CHFT Charity will.....

Engage with communities across Calderdale and Huddersfield to increase our awareness.	So that	CHFT Charity is a widely recognised, impactful and well supported charity – at the very heart of our communities.
Support people who would like to show their appreciation for the care they or their loved one may have received at CHFT.	So that	Donor experience is exceptional and will contribute toward building a strong reputation as an outstanding charity across our communities.
Work with CHFT staff to identify opportunities to turn the everyday into the amazing, by funding only the most impactful projects and initiatives aligned to the charity funding priorities.	So that	<p>Patient and visitor experience and care is enhanced.</p> <p>Staff health, wellbeing and development opportunities are realised.</p> <p>Key issues addressing health inequalities across our communities are supported.</p>
Ensuring excellent governance and ethical standards of charity practice.	So that	CHFT Charity successfully delivers their purpose/charitable function, while serving their beneficiaries with the support of an effective Trustee, showing leadership, good decision making, a grasp of risk and integrity in a climate of openness and accountability.



Looking ahead

How we will deliver our goals – Priority 1:

Identify ways to make an amazing difference through funding only the most impactful projects and initiatives, aligned to four funding priorities.



Enhance patient care

We'll fund innovative and emerging technologies, treatments and enhanced medical equipment that can change or save a patient's life that wouldn't otherwise be available.



Improve patient experience

We'll fund the transformation of tired, underused spaces into welcoming, healing spaces. We'll provide the added extras and resources to support patients and their loved one, enhancing their experience in our hospitals and communities.



Support colleagues

Through improvements to staff areas, funding wellbeing projects and supporting of training opportunities, that ultimately translates into better care and treatment for patients.



Work together

Developing and engaging with community partners to help tackle health inequalities and creating healthier communities.

How we will deliver our goals – Priority 2:

Operate effectively and efficiently as a trusted charity, with connected and engaged supporters and volunteers.



Financial health

- Significant increase in fundraising income, from diverse range of sources.
- Strategic fundraising aligned with the Trust's strategy and priorities.
- Achieved by staying up to date with fundraising trends and source new funding.



People

- Well supported Charity Team, with a shared ambition motivated by the Charity's positive outlook, amazing values and impact led operations.



Impact

- Deliver an effective and accessible grants programme.
- Strategic grant-making aligned to major capital projects within the trust.



Profile

- Increased visibility, profile and understanding of the Charity within the hospitals and wider community.
- Well recognised brand identity that becomes a household name in our region.
- Loyal and informed supporter base.



Governance

- Ensure excellent governance and ethical standards of charity practice.
- Efficient and effective charity operations.
- Well managed charitable funds.

Key actions 2024 - 25

During the year, we will achieve our goals and priorities with a professional charity team and through innovative fundraising and impactful grant programmes, a focus on the following six areas:

01

AWARENESS

Increase visibility through the launch of the Charity's AMAZING new brand.

02

OPERATIONS

Update the Charity's operations and digital capabilities.

03

DONOR

Develop and embed a comprehensive donor journey.

04

FUNDRAISING

Diversify income streams, linked to mobilising a public fundraising appeal.

05

GRANTS

Update grant making processes, evaluation, and impact monitoring.

06

THE FUTURE

Develop an action plan and longer-term plan for the Charity.



Proud to Support
Our AMAZING Charity 😊

**Thank you for
making amazing
things happen.**



**Financial
Statement**

Governance

Role and Responsibilities

The Charity has a Corporate Trustee: Calderdale and Huddersfield NHS Foundation Trust, governed by the law applicable to Trusts, principally the Trustee Act 2000 and the Charities Acts 2011. The NHS Foundation Trust Board devolved responsibility for the on-going management of funds to the Charitable Funds Committee which administers the funds on behalf of the Corporate Trustee.

The Executive Directors and Non-Executive Directors of the Trust Board share the responsibility for ensuring that the NHS body fulfils its duties as Corporate Trustee in managing the Charity.

Non-Executive Directors of the Trust Board are appointed by the Council of Governors, whilst Executive Directors are subject to recruitment by the NHS Foundation Trust Board. Members are not individual trustees under Charity Law but act as agents on behalf of the Corporate Trustee.

As Trustees, all are required to ensure that:

1. the income of the Charity is applied with complete fairness between the persons who are properly qualified to benefit from it,
2. they act reasonably and prudently regarding any decisions made in respect of the Charity,
3. they exercise the same degree of care in dealing with the administration of the funds as that of a prudent businessperson would exercise in managing his or her own affairs or those of someone else for whom he or she was responsible,
4. they are able to demonstrate that its charitable aims are for the public benefit.

Members of the Board who served during the financial year ending 31 March 2024 were as follows:

Name	Role	Date Commenced / left CHFT
Brendan Brown	Chief Executive	04.01.2022
Rob Aitchison	Deputy Chief Executive	14.11.2022
David Birkenhead	Executive Medical Director	01.12.1999
Gary Boothby	Executive Director of Finance	07.03.2016
Kirsty Archer	Executive Director of Finance (joint)	01.10.2022
Lindsay Rudge	Executive Director of Nursing	16.01.2023
Suzanne Dunkley	Executive Director of Workforce and Organisational Development	01.02.2018
Helen Hirst	Non-Executive Director	01.07.2022
Karen Heaton	Non-Executive Director	01.03.2016 - 27.02.24
Andy Nelson	Non-Executive Director	01.10.2017
Denise Sterling	Non-Executive Director	01.10.2019
Peter Wilkinson	Non-Executive Director	01.10.2019
Tim Busby	Non-Executive Director	01.06.2022
Nigel Broadbent	Non-Executive Director	01.09.2022
Jo-Anne Wass	Non-Executive Director	07.03.2024

FINANCIAL REVIEW

Income

In 2023/24 the total incoming resources amounted to £381,000. This is an increase of £17,000 on the previous year's balance of £364,000; this was due to increases in legacies £128,000 and a decrease in charitable activities income (£173,000) which were then offset by an increase in donations £45,000.

The total expenditure of the Charity exceeded the income received by £266,000. In addition, there was a positive movement of £278,000 arising from the revaluation of investment assets. As such, there was an overall increase in the funds of £12,448 to £2,512,282.

Expenditure

In 2023/24 the Charity spent £505,000 on charitable activities; this includes an allocation of the support costs that the Charity incurred in the administration of the fund of £40,699.73 comprising costs for independent review and other establishment costs which include online giving fees and printing and stationery costs.

The Charity also incurred costs of £142,000 in raising funds and £0 in other resources expended.

Going Concern

The accounts have been prepared on a going concern basis. At the end of the financial year Calderdale and Huddersfield NHS Charity had total net assets of £2.512 million, of which £1.585 million is in unrestricted funds. The Trustees have reviewed its commitment for the next 12 months and are confident that there are sufficient unrestricted free reserves to meet its commitments as they fall due. The Charity maintains an adequate cash position to meet its ongoing expenditure requirements. The Corporate Trustee considers that there are no material uncertainties about the Charity's ability to continue as a going concern.

Reserves Policy

The Corporate Trustee has a legal duty to apply charitable funds within a reasonable time of their receipt but should also hold some money in reserve. Within the Charity we therefore have three funds which form our reserves – the two General Purpose funds and the General Reserves fund. The balances on these, less any commitments, form the total of the Charity's Reserves.

The Corporate Trustee encourages the use of balances and intends that designated funds are spent within a reasonable period of receipt and therefore expects to only maintain a minimum reserve balance to allow the charity to remain operational and to mitigate unforeseen circumstances.

It is necessary to retain reserves over the longer term to:

- Reduce the impact of risks should the levels of income (including fluctuations in the value of investments) significantly reduce such that the Charity cannot meet its obligations.
- Ensure the Charity can cover its ongoing operational costs – these include governance costs such as salaries and audit fees and also fundraising costs.
- Meet the closure or transfer of the Charity's affairs should the need arise.

The Reserves Policy states *The Corporate Trustee aims to retain, as a minimum, a level of reserves sufficient to provide funding for **three months' operational costs** (including governance and fundraising costs) plus a buffer to allow for fluctuations in investment market values.*

Investment Policy and Performance

All investments are made in accordance with guidance issued by the Charity Commission; the Charity's investment manager is CCLA Investment Management Ltd.

The Charity seeks to balance ethical and socially responsible investment and risk. As such, the investment managers appointed by the Charity are restricted from investing directly in the processing and/or manufacture of tobacco products, and the portfolio of investment is widely diversified.

The investment objective is to provide a balance between long term capital growth, security, availability and maximisation of annual income.

At 31 March 2024, the market value of investments managed by the Charity's investment manager, CCLA Investment Management Ltd, was £2,346,000 compared to £2,378,000 at 31 March 2023.

During the financial year 2023/24, Calderdale and Huddersfield NHS Foundation Trust Charitable Funds made a £278,000 unrealised gain on investment assets; this is compared to an unrealised loss experienced in 2022/23 of (£63,000). The Charity also liquidated £310,000.

REFERENCE AND ADMINISTRATIVE DETAILS

Calderdale and Huddersfield NHS Charity	
Registered Charity Number	1103694
Governing Document	The governing document, dated 18 March 2004, is a Trust Deed setting out how the Charity should be operated and incorporates the regulations to which it must abide.
Principal and Registered Office	Calderdale & Huddersfield NHS Foundation Trust Trust Headquarters, Acre Mills, Acre Street, Lindley, Huddersfield, HD3 3EB. T: 01484 344344

Charitable Objects

The object of the Charity is to apply income received from donations and legacies to any charitable purpose or purposes relating to the NHS to benefit the public served by the Trust. The Corporate Trustee fulfils its legal duty by ensuring that funds are spent in accordance with the objects of each fund and, in designating funds, the Corporate Trustee respects the wishes of donors to benefit patient care and advance the good health and welfare of patients, carers and staff.

The Corporate Trustee confirms that it has referred to the guidance contained in the Charity Commission's general guidance on public benefit when reviewing the Trust's aims and objectives and in planning future activities.

The longer term aim of the Charity is to continue applying income received from donations and legacies to benefit the public served by the Trust, whilst maintaining minimal levels of reserves.

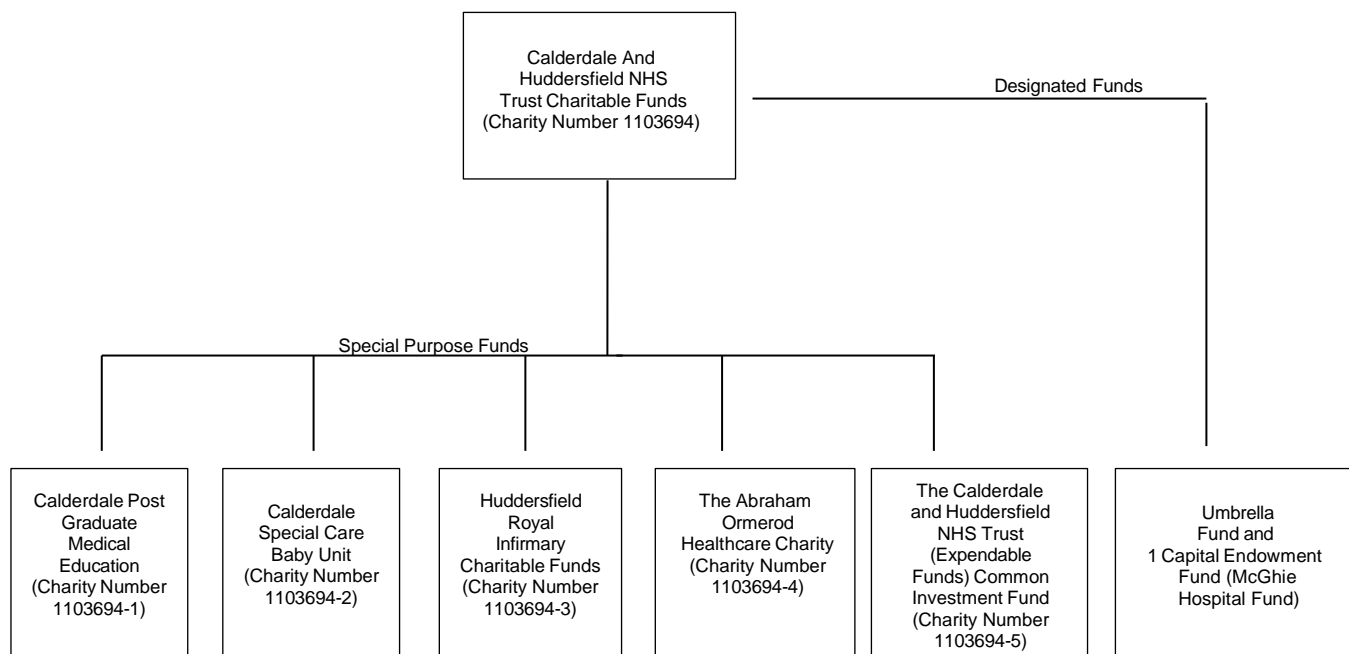
Impact and meeting the Objects

The Charity closely manages all aspects of charitable fund expenditure, reviewing and evaluating outcome and impact across all levels and purposes of funding.

Through ongoing monitoring and gathering of data related to the expenditure of donations, the Charity can showcase its impact through the form of case studies and outcome reporting, all of which is publicly available.

Fund Structure and Linked Charities

Calderdale and Huddersfield NHS Charity comprises of the Umbrella Fund and five Special Purpose Funds. Each of the five special purpose funds (linked charities) shares the same charity number as Calderdale and Huddersfield NHS Charity and has the same Trustee.



The designated funds receive income mainly through legacies and donations. On accepting such income no legal obligation is created as to its expenditure but it is the intention of the Corporate Trustee that any income received into Charitable Funds will be spent in line, as far as possible, with the wishes of the donor. It is to this end, therefore, that separate accounts are kept within the Umbrella fund for each of the designated funds.

The only income which the McGhie Hospital fund attracts is dividends on the capital investment. This fund is a permanent endowment; the income from the capital is to be split equally between the general purpose funds for Calderdale and Huddersfield.

Of the 5 special purpose funds registered with the Charity Commission, Calderdale Post Graduate Medical Education (PGME), Calderdale Special Care Baby Unit (SCBU) and Huddersfield Royal Infirmary also receive income from legacies and donations but have restrictions on where the funds can be spent.

The Calderdale and Huddersfield NHS Trust (Expendable Funds) Common Investment fund is a scheme that is registered with the Charity Commission that allows the Charity to combine the investment and money belonging to a number of funds into one pooled fund.

Each fund has at least one fund manager and funds are grouped by division.

The responsibility for approving expenditure of less than £500 from Charitable Funds has been delegated to the fund manager. For amounts that are greater than £500 further additional approval is required depending on the amount and type of expenditure. This could be a General Manager, Assistant Director of Nursing/Finance or higher level.

Fund Management

Calderdale and Huddersfield NHS Charity makes grants from both its unrestricted and restricted funds. The grants from restricted funds must be used in accordance with the conditions attached to the fund.

Unrestricted fund grants are made from general purpose funds and designated (earmarked) funds.

- **General funds.** These funds are received with no preference expressed by donors. The Charitable Funds Committee invites applications from any member of staff to this fund. Based on their knowledge of the Trust, the Committee agrees funding priorities and scores applications for quality and value for money.
- **Designated funds.** These contain donations where a particular part of the hospital or activity was nominated for support by the donor at the time their donation was made. Whilst their nomination is not binding on the Trustee, the designated funds reflect these nominations. The designated funds are overseen by fund managers who can make recommendations on how to spend the money within their designated area.

Professional Advisors

Principal Professional Advisors

Bankers

National Westminster Bank plc
8 Market Place
Huddersfield
HD1 2AL

Investment Managers

CCLA Investment Management Ltd
One Angel Lane
London
EC4V 4ET

Independent Examiner Advisors

Stirk Lambert & Co Chartered Accountants and Tax

Russell Chambers
61A, North Street
Keighley
West Yorkshire
BD21 3DS

Legal Advisors

Hempsons Solicitors
The Exchange
Station Parade
Harrogate
HG1 1TS

STATEMENT OF TRUSTEES' RESPONSIBILITIES IN RESPECT OF THE TRUSTEES' ANNUAL REPORT AND THE FINANCIAL STATEMENTS

Under charity law, the trustees are responsible for preparing a Trustees' Annual Report and the financial statements in accordance with applicable law and regulations. The trustees are required to prepare the financial statements in accordance with UK Accounting Standards, including FRS 102 *The Financial Reporting Standard applicable in the UK and Republic of Ireland*.

The financial statements are required by law to give a true and fair view of the state of affairs of the charity and of the incoming resources and application of resources for that period.


In preparing these financial statements, generally accepted accounting practice entails that the trustees:

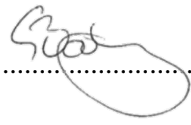
- select suitable accounting policies and then apply them consistently;
- make judgements and estimates that are reasonable and prudent;
- state whether applicable UK Accounting Standards and the Statement of Recommended Practice have been followed, subject to any material departures disclosed and explained in the financial statements;
- state whether the financial statements comply with the trust deed (and rules), subject to any material departures disclosed and explained in the financial statements,
- assess the charity's ability to continue as a going concern, disclosing, as applicable, matters related to going concern; and
- use the going concern basis of accounting unless they either intend to liquidate the charity or to cease operations, or have no realistic alternative but to do so.

The trustees are required to act in accordance with the trust deed (and the rules) of the charity, within the framework of trust law. They are responsible for keeping accounting records which are sufficient to show and explain the charity's transactions and disclose at any time, with reasonable accuracy, the financial position of the charity at that time, and to enable the trustees to ensure that, where any statements of accounts are prepared by them under section 132(1) of the Charities Act 2011, those statements of accounts comply with the requirements of regulations under that provision. They are responsible for such internal control as they determine is necessary to enable the preparation of financial statements that are free from material misstatement, whether due to fraud or error, and have general responsibility for taking such steps as are reasonably open to them to safeguard the assets of the charity and to prevent and detect fraud and other irregularities.

The trustees are responsible for the maintenance and integrity of the financial and other information included on the charity's website. Legislation in the UK governing the preparation and dissemination of financial statements may differ from legislation in other jurisdictions.

By Order of the Corporate Trustee

Signed Mrs Helen Hirst, Chair 

Signed Mr Gary Boothby, Director of Finance.....  Dated 05/11/ 2024

**Independent Examiner's Report to the Trustee of
of Calderdale and Huddersfield NHS Charity**

Independent examiner's report to the trustee of Calderdale and Huddersfield NHS Charity

I report to the charity trustee on my examination of the accounts of Calderdale and Huddersfield NHS Charity (the Trust) for the year ended 31 March 2024.

Responsibilities and basis of report

As the charity trustee of the Trust you are responsible for the preparation of the accounts in accordance with the requirements of the Charities Act 2011 ('the Act').

I report in respect of my examination of the Trust's accounts carried out under section 145 of the Act and in carrying out my examination I have followed all applicable Directions given by the Charity Commission under section 145(5)(b) of the Act.

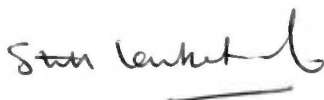
Independent examiner's statement

Since your charity's gross income exceeded £250,000 your examiner must be a member of a listed body. I can confirm that I am qualified to undertake the examination because I am a registered member of the Institute of Chartered Accountants in England & Wales which is one of the listed bodies.

I have completed my examination. I confirm that no material matters have come to my attention in connection with the examination giving me cause to believe that in any material respect:

1. accounting records were not kept in respect of the Trust as required by section 130 of the Act; or
2. the accounts do not accord with those records; or
3. the accounts do not comply with the applicable requirements concerning the form and content of accounts set out in the Charities (Accounts and Reports) Regulations 2008 other than any requirement that the accounts give a true and fair view which is not a matter considered as part of an independent examination.

I have no concerns and have come across no other matters in connection with the examination to which attention should be drawn in this report in order to enable a proper understanding of the accounts to be reached.



Richard J Hudson FCA
Stirk Lambert & Co
Chartered Accountants
Russell Chambers
61a North Street
Keighley
West Yorkshire
BD21 3DS

13 January 2025

CALDERDALE AND HUDDERSFIELD NHS FOUNDATION TRUST CHARITABLE FUNDS

ACCOUNTS – 2023/24

STATEMENT OF FINANCIAL ACTIVITIES FOR THE YEAR ENDED 31 MARCH 2024

	Notes	Unrestricted funds £'000	Restricted funds £'000	Endowment funds £'000	2023/24 Total funds £'000	2022/23 Total funds £'000
Income and endowments from:						
Donations and legacies	3	371	6	0	377	187
Charitable Activities	4	0	0	0	0	173
Investments	5	4	0	0	4	4
Other	5	0	0	0	0	0
Total incoming resources		375	6	0	381	364
Expenditure on:						
Raising funds	6	131	11	0	142	136
Charitable activities	7					
Purchase of new equipment		117	115	0	232	487
New building and refurbishment		29	11	0	40	142
Staff education and welfare		47	19	0	66	76
Patient education and welfare		165	2	0	167	126
Contribution to NHS		0	0	0	0	0
Total charitable activities		358	147	0	505	831
Other resources expended		0	0	0	0	23
Total expenditure	8	489	158	0	647	990
Net gains / (losses) on investments	13	275	(9)	12	278	(63)
Net income/(expenditure)		161	(161)	12	12	(689)
Transfers between funds	10	0	0	0	0	0
Net movement in funds		161	(161)	12	12	(689)
Reconciliation of Funds						
Total Funds brought forward		1,424	954	122	2,500	3,189
Total funds carried forward		1,585	793	134	2,512	2,500

CALDERDALE AND HUDDERSFIELD NHS FOUNDATION TRUST CHARITABLE FUNDS

ACCOUNTS – 2023/24

BALANCE SHEET AS AT 31 MARCH 2024

	Notes	Unrestricted funds £'000	Restricted funds £'000	Endowment funds £'000	Total at 31 March 2024 £'000	Total at 31 March 2023 £'000
Fixed assets						
Investments	13	1,445	767	134	2,346	2,378
Total fixed assets		1,445	767	134	2,346	2,378
Current assets						
Debtors	14	114	0	0	114	44
Cash and cash equivalents	15	98	26	0	124	273.35
Total current assets		212	26	0	238	317
Liabilities						
Creditors: amounts falling due within one year	16	(72)		0	(72)	(195)
Net current assets / (liabilities)		140	26	0	166	122
Total assets less current liabilities		1,585	793	134	2,512	2,500
Total net assets		1,585	793	134	2,512	2,500
Funds of the charity	19					
Endowment funds		0	0	134	134	122
Restricted income funds		0	793	0	793	954
Unrestricted income funds		1,585	0	0	1,585	1,424
Total funds		1,585	793	134	2,512	2,500

The accompanying notes form part of these financial statements.


CALDERDALE AND HUDDERSFIELD NHS FOUNDATION TRUST CHARITABLE FUNDS

ACCOUNTS – 2023/24

STATEMENT OF CASH FLOWS AS AT 31 MARCH 2024

	Note	Total at 31 March 2024 £'000	Total at 31 March 2023 £'000
Cash flows from operating activities:			
Net cash provided by (used in) operating activities	18	(465)	(699)
Cash flows from investing and other activities:			
Dividends from investments	5	4	4
Other income	5	0	0
Net cash provided by (used in) investing activities		4	4
Receipt from sale of investments	13	310	500
Net cash provided by financial investment		310	500
Change in cash and cash equivalents in the reporting period		(149)	(195)
Cash and cash equivalents at the beginning of the reporting period	15	273	468
Cash and cash equivalents at the end of reporting period	15	124	273

The notes 1-24 on the following pages form part of these accounts. The financial statements and the accompanying notes were approved by the Board of Directors on 05.11.24 and were signed on its behalf by Gary Boothby, Director of Finance.

Signed  Mrs Helen Hirst, Chair

CALDERDALE AND HUDDERSFIELD NHS FOUNDATION TRUST CHARITABLE FUNDS

ACCOUNTS – 2023/24

NOTES TO THE ACCOUNTS

1 Accounting policies

a) Basis of preparation

The financial statements have been prepared under the historic cost convention, except for investments which are included at fair value.

The financial statements have been prepared in accordance with the Statement of Recommended Practice: Accounting and Reporting by Charities preparing their accounts in accordance with the Financial Reporting Standard applicable in the UK and Republic of Ireland (FRS 102) issued in October 2019 and the Financial Reporting Standard applicable in the United Kingdom and Republic of Ireland (FRS 102) and the Charities Act 2011 and UK Generally Accepted Practice as it applies from 1 January 2019.

The financial statements have been prepared to give a 'true and fair' view and have departed from the Charities (Accounts and Reports) Regulations 2008 only to the extent required to provide a 'true and fair view'. This departure has involved following Accounting and Reporting by Charities preparing their accounts in accordance with the Financial Reporting Standard applicable in the UK and Republic of Ireland (FRS 102) issued in October 2019 rather than the Accounting and Reporting by Charities: Statement of Recommended Practice effective from 1 April 2005 which has since been withdrawn.

The Corporate Trustee considers that there are no material uncertainties about the Charity's ability to continue as a going concern.

b) Governance costs

Governance costs are classified as support costs and have therefore been apportioned across charitable activities, after a portion has been allocated to Raising Funds. These costs include costs related to the statutory audit and an apportionment of overhead and other support costs.

The analysis of support costs, including governance costs, is shown in note 9.

c) Structure of funds

Unrestricted income funds comprise those funds which the Corporate Trustee is free to use for any purpose in furtherance of its charitable objectives. Unrestricted funds include designated funds where the donor has made known their non-binding wishes or where the Corporate Trustee, at its discretion, has created a fund for a specific purpose.

Restricted funds are those which are to be used in accordance with specific restrictions imposed by the donor. The Charity has six restricted funds. The restrictions on CRH SCBU, CRH PGME and HRI Special Purpose funds (see note 19) primarily limit any expenditure from these funds to be undertaken for the benefit of the stated purpose contained in the fund title. The fourth and fifth restricted funds are the Abraham Ormerod fund and the Abraham Ormerod Reserve fund. They both have the same restriction, which is that the approved expenditure must, where possible, be for services provided

for the benefit of people in the Todmorden area. The sixth restricted fund is the Covid-19 fund where the grants from NHS Charities Together were allocated.

Endowment Funds are where capital is held to generate income for charitable purposes with no discretion to spend capital. The Charity has one permanent endowment fund, McGhie Hospital.

CALDERDALE AND HUDDERSFIELD NHS FOUNDATION TRUST CHARITABLE FUNDS

ACCOUNTS – 2023/24

Accounting Policies (continued)

d) Incoming resources

All incoming resources are recognised once the Charity has entitlement to the resources, it is probable (more likely than not) that the resources will be received, and the monetary value of incoming resources can be measured with sufficient reliability.

Donations are recognised when the Charity has been notified in writing of both the amount and settlement date.

Interest on funds held on deposit is included when receivable and the amount can be measured reliably by the Charity; this is normally upon notification of the interest paid or payable by the bank. Dividends are recognised once the dividend has been declared and notification has been received of the dividend due. This is normally upon notification by our investment advisor of the dividend yield of the investment portfolio.

e) Gifts in kind

Gifts in kind, such as food and care packages are not accounted for when they are accepted and immediately distributed unless a single donation is material.

Gifts of tangible assets such as mattresses and fridges are recognised as a donation at fair value (market price) on receipt and charitable expenditure when they are distributed. Where gifts in kind are held before being distributed to beneficiaries, they are recognised at fair value as stock until they are distributed.

f) Incoming resources from legacies

Legacies are accounted for as incoming resources either upon receipt or where the receipt of the legacy is probable; this will be once confirmation has been received from representatives of the estate(s) that probate has been granted, the executors have established that there are sufficient assets in the estate to pay the legacy and all conditions attached to the legacy have been fulfilled or are within the Charity's control.

If there is uncertainty as to the amount of the legacy and it cannot be reliably estimated, then the legacy is shown as a contingent asset until all the conditions for income recognition are met (see Note 20 - Material legacies).

g) Resources expended

All expenditure is accounted for on an accruals basis and has been classified under headings that aggregate costs related to each category of expense shown in the Statement of Financial Activities. All expenditure is recognised once there is a legal constructive obligation committing the Charity to the expenditure.

h) Irrecoverable VAT

Irrecoverable VAT is charged against the category of resources expended for which it was incurred.

i) Allocation of support costs

Support costs are those costs which do not relate directly to a single activity. These include some staff costs, costs of administration and audit costs. They are allocated to charitable activities, across the funds in proportion to total expenditure, as shown in note 9, after a portion has been allocated to Raising Funds.

j) Fundraising costs

The costs of generating funds are those costs attributable to generating income for the Charity, other than those costs incurred in undertaking charitable activities. These are fundraising costs and they include expenses for fundraising activities and a fee paid to Calderdale & Huddersfield NHS Foundation Trust to pay the salary and overhead costs of the fundraising team – see note 6.

k) Charitable activities

Costs of Charitable Activities comprise all costs incurred in the pursuit of charitable objects of the Charity. These costs comprise direct costs and overhead and support costs.

l) Fixed asset investments

Investments are initially recognised at their transaction value and are subsequently measured at the current market value quoted by the investment analyst, as at the balance sheet date. The Statement of Financial Activities includes the net gains and losses arising on revaluation.

The main form of financial risk faced by the Charity is that of volatility in equity markets and investment markets due to wider economic conditions and the attitude of investors to investment risk.

m) Debtors

Debtors are amounts owed to the Charity. They are measured based on their recoverable amount.

n) Cash and cash equivalents

Cash at bank and in hand is held to meet the day to day running costs of the Charity as they fall due. Cash equivalents are balances held in the deposit account which are very liquid funds and are shown as part of 'Cash and cash equivalents' on the balance sheet. There is no impact on the total funds of the Charity. An analysis of Cash and cash equivalents is provided in note 15.

o) Creditors

Creditors are amounts owed by the Charity. They are measured at the amount that the Charity expects to have to pay to settle the debt.

p) Recognised gains and losses

All gains and losses are taken to the Statement of Financial Activities as they arise. Unrealised gains and losses are calculated as the difference between the market value at the year end and opening market value (or value at date of purchase if later).

2 Prior year comparatives by type of fund

The primary statements provide prior year comparatives in total; this note provides prior period comparatives for the Statement of Financial Activities and the Balance Sheet for each of the three types of funds that the Charity manages.

CALDERDALE AND HUDDERSFIELD NHS FOUNDATION TRUST CHARITABLE FUNDS

ACCOUNTS – 2023/24

NOTES TO THE ACCOUNTS

2a Unrestricted funds

Statement of financial activity for the year ended 31 March 2024

	2024 £'000	2023 £'000
Income and endowments from:		
Donations and legacies	371	178
Investments	4	4
Total income and endowments	375	182
Expenditure on:		
Raising funds	131	135
Charitable activities		
Purchase of new equipment	117	426
New building and refurbishment	29	122
Staff education and welfare	47	63
Patient education and welfare	165	113
Total charitable activities	358	724
Total expenditure	489	859
Net losses on investments	275	(40)
Net income/(expenditure)	161	(717)
Transfers between funds	0	0
Net movement in funds	161	(717)
Reconciliation of Funds		
Total Funds brought forward	1,424	2,141
Total funds carried forward	1,585	1,424

Balance sheet as at 31 March 2024

	2024 £'000	2023 £'000
Fixed assets		
Investments	1,445	1,327
Total fixed assets	1,445	1,327
Current assets		
Debtors	114	44
Cash and cash equivalents	98	236
Total current assets	212	280
Liabilities		
Creditors: amounts falling due within one year	(72)	(183)
Net current assets / (liabilities)	140	97
Total assets less current liabilities	1,585	1,424
Total net assets	1,585	1,424
Total unrestricted funds	1,585	1,424

CALDERDALE AND HUDDERSFIELD NHS FOUNDATION TRUST CHARITABLE FUNDS

ACCOUNTS – 2023/24

NOTES TO THE ACCOUNTS

2b Restricted funds

Statement of financial activity for the year ended 31 March 2024

	2024	2023
	£'000	£'000
Income and endowments from:		
Donations and legacies	6	9
Charitable Activities	0	173
Total income and endowments	6	182
Expenditure on:		
Raising funds	11	1
Charitable activities		
Purchase of new equipment	115	61
New building and refurbishment	11	20
Staff education and welfare	19	13
Patient education and welfare	2	13
Total charitable activities	147	107
Other resources expended	0	23
Total expenditure	158	131
Net losses on investments	(9)	(17)
Net income/(expenditure)	(161)	34
Transfers between funds	0	0
Net movement in funds	(161)	34
Reconciliation of Funds		
Total Funds brought forward	954	920
Total funds carried forward	793	954

Balance sheet as at 31 March 2024

	2024	2023
	£'000	£'000
Fixed assets		
Investments	767	929
Total fixed assets	767	929
Current assets		
Debtors	0	0
Cash and cash equivalents	26	37
Total current assets	26	18
Liabilities		
Creditors: amounts falling due within one year	0	(12)
Net current assets / (liabilities)	26	25
Total assets less current liabilities	793	954
Total net assets	793	954
Total restricted funds	793	954

2c Endowment funds

Statement of financial activity for the year ended 31 March 2024

	2024 £'000	2023 £'000
Net Gain / loss on investments	12	(6)
Net income/(expenditure)	12	(6)
Transfers between funds	0	0
Net movement in funds	12	(6)
Reconciliation of Funds		
Total Funds brought forward	122	128
Total funds carried forward	134	122

Balance sheet as at 31 March 2024

	2024 £'000	2023 £'000
Fixed assets		
Investments	134	122
Total fixed assets	134	122
Total assets less current liabilities	134	122
Total net assets	134	122
Total endowment funds	134	122

CALDERDALE AND HUDDERSFIELD NHS FOUNDATION TRUST CHARITABLE FUNDS

ACCOUNTS – 2023/24

NOTES TO THE ACCOUNTS

3 Analysis of voluntary income

	Unrestricted funds	Restricted funds	Endowment funds	2023/24 Total funds	2022/23 Total funds
	£'000	£'000	£'000	£'000	£'000
Donations	190	6	0	196	98
Corporate donations			0	-	36
Legacies	181	0	0	181	53
	371	6	0	377	187

4 Analysis of income from charitable activities (NHS Charities Together grants)

	Unrestricted funds	Restricted funds	Endowment funds	2023/24 Total funds	2022/23 Total funds
	£'000	£'000	£'000	£'000	£'000
Stage 3 Long Term Recovery Grant	0	0	0	0	143
Development Grant	0	0	0	0	30
	0	0	0	0	173

5 Total income from operating activities

	Unrestricted funds	Restricted funds	Endowment funds	2023/24 Total funds	2022/23 Total funds
	£'000	£'000	£'000	£'000	£'000
Fixed asset investments UK	4	0	0	4	4
	4	0	0	4	4

The dividends above relate to the McGhie Hospital fund; these are shared equally between both General Purpose funds.

Other Income

Other income is £nil - £nil in 2022/23.

CALDERDALE AND HUDDERSFIELD NHS FOUNDATION TRUST CHARITABLE FUNDS

ACCOUNTS – 2023/24

NOTES TO THE ACCOUNTS

6 Analysis of expenditure on raising funds

In 2023/24 the Charity continued to use only one investment manager. For the current year, the fee for the COIF Charities Ethical Investment fund is 0.60% which is charged annually based on the capital balance (2022/23: 0.60%).

6 Analysis of expenditure on raising funds

	Unrestricted funds	Restricted funds	Endowment funds	2023/24 Total funds	2022/23 Total funds
	£'000	£'000	£'000	£'000	£'000
Fundraising Costs	131	11	0	142	132
Support Costs	-	0	0	-	4
	131	11	0	142	136

The fundraising costs above include staff costs, memberships, marketing and resources and other fundraising event costs.

7 Analysis of charitable expenditure

The Charity made grant support available to Calderdale and Huddersfield NHS Foundation Trust and Locala Community Partnership for the purchase of equipment and contributions for staff and patient education, amenities, and welfare.

	Grant funded activity			Support costs			Total 2023/24			Total 2022/23
	Unrestricted funds	Restricted funds	Total funds	Unrestricted funds	Restricted funds	Total funds	Unrestricted funds	Restricted funds	Total	
	£'000	£'000	£'000	£'000	£'000	£'000	£'000	£'000	£'000	£'000
Purchase of new equipment	106	109	215	11	6	17	117	115	232	487
New building and refurbishment	26	11	37	3	-	3	29	11	40	142
Staff education,welfare and amenities	43	18	61	4	1	5	47	19	66	76
Patient education,welfare and amenities	150	2	152	15	-	15	165	2	167	126
	325	140	465	33	7	40	358	147	505	831

The Charity also made available grant support of £0 (2022/23: £23,000) – this was for Age Concern Todmorden and Todmorden Food Drop In Service.

8 Analysis of grants

The main beneficiary of the Charity is the related party, Calderdale and Huddersfield NHS Foundation Trust, but grants are also made to Locala Community Partnership. The Corporate Trustee operates a scheme of delegation through which all grant funded activity is managed by fund managers responsible for the day-to-day disbursements from their designated funds in accordance with the directions set out in the Charity standing orders and standing financial instructions.

	2023/24 £'000	2022/23 £'000
Raising funds	142	136
Grants made:		
NHS Foundation Trust	505	831
Locala Community Partnership	0	0
	505	831
Other Resources Expended	0	23
Total resources expended	647	990

CALDERDALE AND HUDDERSFIELD NHS FOUNDATION TRUST CHARITABLE FUNDS

ACCOUNTS – 2023/24

NOTES TO THE ACCOUNTS

9 Allocation of governance and support costs

Support and overhead costs are apportioned to charitable activities according to the value of transactions that have occurred within each activity in the year. Governance costs are those support costs which relate to the strategic and day to day management of the Charity.

	Raising Funds	Charitable Activities	2023/24 Total	2022/23 Total
	£'000	£'000	£'000	£'000
Support and governance costs				
Financial services	0	22	22	29
Salaries and related costs	0	15	15	5
External and internal audit costs	0	3	3	4
Establishment costs	0	0	0	1
	0	40	40	39

	Unrestricted funds	Restricted funds	Endowment funds	2023/24 Total	2022/23 Total
	£'000	£'000	£'000	£'000	£'000
Support and governance costs					
Raising funds	0	0	0	0	4
Charitable Activities	33	7	0	40	35
	33	7	0	40	39

	Unrestricted funds	Restricted funds	Endowment funds	2023/24 Total	2022/23 Total
	£'000	£'000	£'000	£'000	£'000
Support and governance costs for charitable activities					
Financial services	16	6	0	22	26
Salaries and related costs	11	4	0	15	5
External and internal audit costs	2	1	0	3	3
Establishment costs	0	0	0	0	1
	29	11	0	40	35

	£'000	£'000	£'000	£'000	£'000	£'000	£'000
Apportionment of support costs across charitable expenditure							
Financial services	10	3	7	2	0	22	26
Salaries and related costs	7	2	5	1	0	15	5
External and internal audit costs	3	-	-	-	0	3	3
Establishment costs	-	-	-	0	0	0	1
	20	4	12	3	0	40	35

CALDERDALE AND HUDDERSFIELD NHS FOUNDATION TRUST CHARITABLE FUNDS

ACCOUNTS – 2023/24

NOTES TO THE ACCOUNTS

10 Transfers between funds

There were no transfer between funds in 2023/24 (2022/23: nil).

11 Analysis of staff costs

The Charity does not directly employ any members of staff. The administration and fundraising are carried out by staff from the Trust and recharged to the Charity.

None of these staff received any other employee benefits in either year and nor did any individual receive employee benefits (excluding employer pension costs) above £60,000.

	£'000	2023/24		2022/23		2023/24		2022/23	
		Salaries	ER Pension/ ERS NI	Salaries	ER Pension/ ERS NI	Total	Total	Total	Total
Admin		31	9	31	4	40	35		
Fundraising		99	24	91	22	123	114		
		130	33	122	26	162	148		

12 Auditor's / External Examiners remuneration

The External Examiners remuneration of £1,620.00 - inclusive of VAT 2022/23: £4,051 KPMG – inclusive of VAT) related solely to the statutory audit, with no other additional work undertaken 2022/23.

13 Fixed asset investments

All investments are made in accordance with the guidance issued by the Charity Commission. The current investments are managed by CCLA.

Funds are either invested in the stock exchange, other securities or held to gain interest in the bank. The Charity's investment objective remains the same, that is, to provide a balance between long term capital growth, security, availability, and maximisation of annual income.

All investments are carried at their fair value.

Movement in year

	2023/24 £'000	2022/23 £'000
Market value at 1 April	2,378	2,941
Add : additions at cost	0	0
Less : disposals at market value and in year gain/(loss) on disposal	(310)	(500)
Add/Less : gain/loss on revaluation	278	(63)
Add : gain/(loss) on in year disposals	0	0
Less : movements in broker held bank accounts	0	0
Market value at 31 March	2,346	2,378

CALDERDALE AND HUDDERSFIELD NHS FOUNDATION TRUST CHARITABLE FUNDS

ACCOUNTS – 2023/24

NOTES TO THE ACCOUNTS

Fixed asset investments (cont.)

Investments in common investment funds

	Units held at 31 March 2024	31 March 2024 total £'000		Units held at 31 March 2023	31 March 2023 total £'000
CCLA Investments Management Ltd			CCLA Investments Management Ltd		
COIF Charities Ethical Investment Fund			COIF Charities Investment Fund		
Accumulation units	432,074	2,211	Accumulation units	485,093	2,256
Income units	43,332	134	Income units	43,332	122
	475,406	2,346		528,425	2,378

Risk Strategy in terms of investments held with investment managers

In line with the investment objectives of the Charity, it is essential that the correct balance of risk and rewards is conveyed to the Investment Managers running the Charity portfolios.

The view of the Charitable Funds Committee is that risk levels should be based on Low and Medium risk.

Low risk

The Charity is prepared to accept a small degree of short-term volatility, in the hope of producing slightly higher returns. The Charity seeks to reduce the risk of returns being exceeded by inflation, while retaining a consistent pattern of returns and accepts the possibility of frequent but minor fluctuations in capital value.

Medium risk

The Charity is prepared to accept risk of some short-term volatility in the pursuit of returns over the medium to long term which should maintain capital after the effects of inflation and is aware that more significant fluctuations in capital are possible.

Liquidity risk

This is anticipated to be low as the Fund holds a diversified portfolio but one biased towards real assets including global equities, property and infrastructure, and with only modest exposure to bonds and cash.

Currency risk

There is an element of currency risk as there are some overseas equities within the portfolio, but these should be minimal as the portfolio is diversified.

CALDERDALE AND HUDDERSFIELD NHS FOUNDATION TRUST CHARITABLE FUNDS

ACCOUNTS – 2023/24

NOTES TO THE ACCOUNTS

14 Analysis of debtors

	31 March 2024 £'000	31 March 2023 £'000
Debtors under 1 year		
Other debtors	114	44
Total	114	44

Other debtors represent any sums owed to the Charity by a related party, Calderdale and Huddersfield NHS Foundation Trust, for income collected by the Trust on behalf of the Charity of £2,400 - 2022/23: £6,000, donations received but not banked until April 2024 of £601 2022/23: £3,000 and also a legacy notified but not yet received of £111,000. - 2022/23: £35,000.

15 Analysis of cash and cash equivalents

	31 March 2024 £'000	31 March 2023 £'000
Analysis of cash at bank		
National Westminster current account	0	0
Short term investments and deposits		
National Westminster deposit account	124	273
Total	124	273

16 Analysis of liabilities

	31 March 2024 £'000	31 March 2023 £'000
Creditors under 1 year		
Other creditors	(72)	(195)
	(72)	(195)

Other creditors mainly represent sums owed by the Charity to a related party, Calderdale and Huddersfield NHS Foundation Trust of £54,000 - 2022/23: £188,000, for costs incurred by the NHS Foundation Trust on behalf of the Charity in the furtherance of the Charity's objectives. It also includes the cost of items or services received but not yet invoiced or paid of £18,000 - 2022/23: £7,000.

CALDERDALE AND HUDDERSFIELD NHS FOUNDATION TRUST CHARITABLE FUNDS

ACCOUNTS – 2023/24

NOTES TO THE ACCOUNTS

17 Provisions for liabilities and charges

The Charity does not have any provisions for liabilities and charges and, as such, has not disclosed any such liabilities and charges in the Statement of Financial Activities.

18 Reconciliation of net income/(expenditure) to net cash flow from operating activities

	31 March 2024 £'000	31 March 2023 £'000
Net income/(expenditure) for 2023/24 (as per SOFA)	12	(689)
Adjustments for:		
(Gains)/losses on investments	(278)	63
Dividends from investments	(4)	(4)
Other income	0	0
(Increase)/decrease in debtors	(70)	(40)
Increase/(decrease) in creditors	(124)	(29)
Net cash provided by (used in) operating activities	(465)	(699)

19 Analysis of charitable funds

	Balance at 31 March 2023 b/fwd £'000	Incoming resources £'000	Resources expended £'000	Transfers £'000	Gains and losses £'000	Balance at 31 March 2024 c/fw £'000
Endowment						
McGhie hospital	122	-	-	-	12	134
	122	-	-	-	12	134
Restricted						
CRH SCBU	14	6	(5)	-	-	15
CRH PGME	15	-	(1)	-	-	14
HRI special purpose fund	10	-	(7)	-	-	3
Covid 19 fund	182	-	(34)	-	-	148
Abraham Ormerod day hospital	173	-	(111)	-	-	62
Abraham Ormerod reserve	560	-	-	-	(9)	551
	954	6	(158)	-	(9)	793
Unrestricted						
Unrestricted funds	1,424	375	(489)	-	275	1,585
Total	2,500	381	(647)	-	278	2,512

All the unrestricted funds are designated funds and are available for any charitable purpose relating to the NHS but are mainly for the stated purpose contained in the fund title. This is in recognition of the non-binding wishes of donors when making their generous gifts.

In the interests of accountability and transparency a complete breakdown of all designated (earmarked) funds is available upon written request.

CALDERDALE AND HUDDERSFIELD NHS FOUNDATION TRUST CHARITABLE FUNDS

ACCOUNTS – 2023/24

NOTES TO THE ACCOUNTS

20 Material legacies

Legacy income is accounted for as incoming resources in the Statement of Financial Activities either upon receipt or where the legacy is probable. Material legacies are those which have been notified as at 31 March 2023 but not recognised as incoming resources in the Statement of Financial Activities due to the conditions for recognition not being met.

Material legacies as at 31 March 2024

2023/24			2022/23		
Notification received from	Date notification received	Estimated value of legacy £'000	Notification received from	Date notification received	Estimated value of legacy £'000
n/a	n/a	0	n/a	n/a	0
		0			0

21 Outstanding Approvals

Expenditure that has been approved internally but not yet delivered or services not yet provided has been summarised below.

Outstanding Expenditure Approvals as at 31 March 2024

	2023/24	2022/23
Fund Manager	Estimated value £'000	Estimated value £'000
Calderdale & Huddersfield NHS Foundation Trust	417	815
	417	815

22 Related party transactions

Calderdale and Huddersfield NHS Foundation Trust is the main related party to the Charity. Payments to creditors are made through the Trust and reimbursed from the Charitable Funds. The Trust paid £589,824 - 2022/23: £917,476 on behalf of the Charity.

During the year, no donations were received from Calderdale and Huddersfield Solutions Limited, a wholly owned subsidiary of Calderdale and Huddersfield NHS Foundation Trust – 2022/23: £0.

CALDERDALE AND HUDDERSFIELD NHS FOUNDATION TRUST CHARITABLE FUNDS

ACCOUNTS – 2023/24

NOTES TO THE ACCOUNTS

23 Trustees' remuneration, benefits and expenses

During the year, no Board Member of the Trust received either remuneration or expenses and none of them, or key management staff, has undertaken any material transactions with the Calderdale and Huddersfield NHS Foundation Trust Charitable Funds. There were also no Trustee indemnity insurance costs during the year.

24 Role of volunteers

Our fund managers are, in effect, volunteers. There are about 200 Trust staff members who manage how the Charity's designated funds should be spent. Each fund manager has been delegated responsibility for approving expenditure of less than £500.